



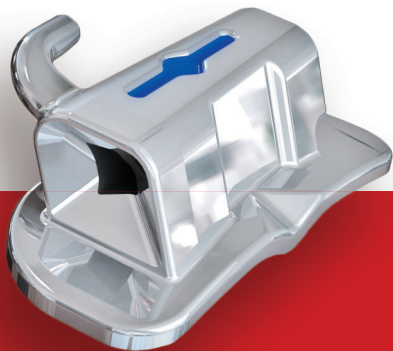


## Aesthetic Bracket

Introducing one of the strongest aesthetic brackets in the industry. Made from a poly sapphire material, provides a pleasing translucency, stain resistance and unprecedented strength. An ultra smooth surface and rounded corners equal patient comfort. Mechanical, ultra-hold base design for reliable bonding and consistent debonding. Blue colored wire slot aids in bracket placement.

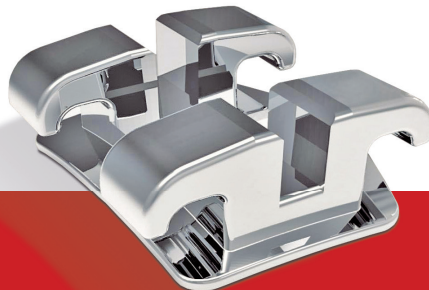


Made in USA



## BUCCAL TUBE

Newest design of an extremely, low profile buccal tube. Patient comfort and clinical effectiveness are the results this tube achieves. Funneled entrance, occlusal/gingival positioning guides, distal notch for additional ligation. 4.2mm.



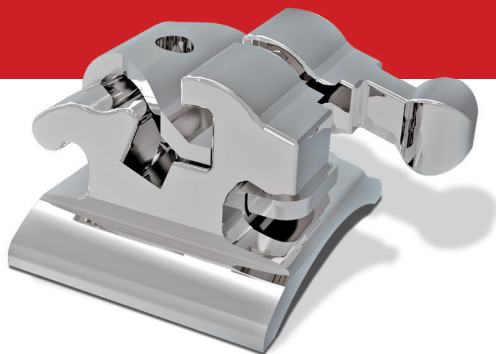
## MINI-TWIN

Latest Mini-Twin bracket with the strength and fortitude to handle the toughest cases. Petite profile, huge on performance. Deep tying undercuts for easy ligation, accurate slot tolerances, and precision design. Integral hooks, 80-gauge mesh.



## PASSIVE SLB

All the advantages of a classic twin design with the benefit of Passive SLB techniques. Achieve quick leveling and aligning, thorough treatment and finish to the demanding criteria you expect. NiTi clip, secure locking mechanism.



## ACTIVE SLB

Next generation Active SLB, with a robust NiTi clip that will seat the larger wires in the bottom of the slot, where they belong. Proven engineering to meet the demand of all cases. Patient comfort realized, with a high retention base.



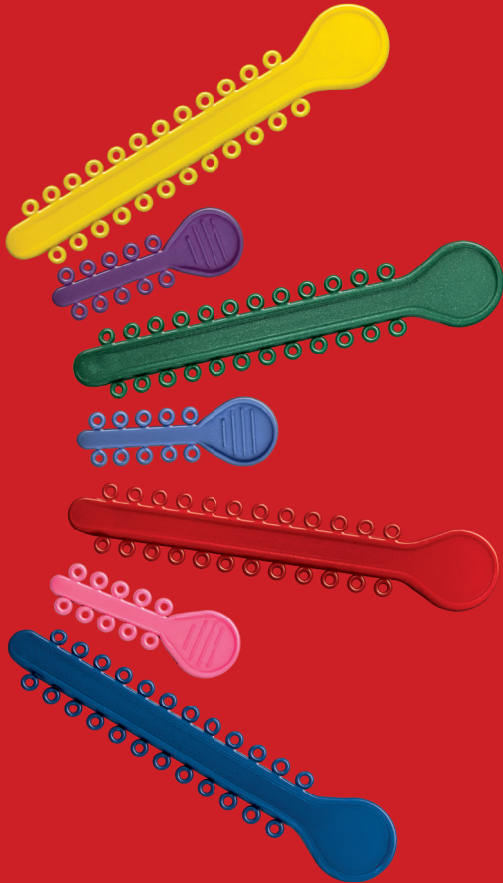
## ACTIVE SLB CERAMIC

Next generation ceramic Active SLB. Same robust NiTi clip as its all metal partner with the added bonus of high density, super strong ceramic construction. Due to the same in/out relationship to the all metal design, cases can be combined easily. Mechanical locking base.



## WIRES

Comprehensive wire series created from the most reliable and tested materials. Each wire is polished to an unsurpassed smoothness to reduce friction and provide the movement you are looking for.



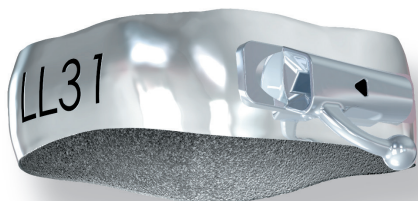
## LIGATURE TIES AND CHAIN

Ligature Ties and Chain are made in the USA from optimum material. They maintain their elasticity over time and do not require frequent changes.



Elastomeric Chain comes in 34 vibrant colors and 3 sizes: Continuous, Short and Long. Each spool contains 15 feet of chain.

## MICRO-ETCHED MOLAR BAND ASSEMBLIES



Ligature Ties are available in two variations: Patient Sticks and Arch Sticks. They are available in 34 vibrant colors. The diameter of each o-ring is .120 – sized to fit any type of bracket.



Made in USA